

Commissioning new schools in Norfolk



Contents Page

Our Vision.....	3
NCC Ambition.....	3
Norfolk's Education Landscape.....	4
Planned housing growth.....	6
Proposed housing developments.....	7
Support for School Improvement.....	8
A Good Education for Every Norfolk Learner.....	9



Our vision

We believe that all children and young people have the right to be healthy, happy and safe, to be loved, valued and respected, and have high aspirations for their future.

NCC ambition

The council's four priorities look beyond our statutory responsibilities. We aim for:

- a well-educated and skilled population
- with 'real' jobs which pay well and have prospects
- in businesses which move or grow here because we are well-connected with improved infrastructure – air, sea, road, rail, broadband and mobile network coverage
- vulnerable people supported – more living independently and safely in their communities

In fulfilling its role as champion for all Norfolk children and families, Norfolk County Council is committed to:

1. Promoting high standards and outcomes from Norfolk's educational institutions
2. Providing sufficient learner places across Norfolk
3. Improving the learning of Norfolk's more vulnerable learners.

Norfolk's Education Landscape

Norfolk is one of the largest counties in the UK, and its geography is a varied mix of urban and rural. It is bordered to the east and north by over 90 miles of coastline. There is a two-tier model of local government in Norfolk.

The school landscape reflects the urban/rural mix. Of the 427 publicly funded schools 51 are secondary and 356 are primary. Norfolk is fortunate in having a thriving family of special schools comprising 10 complex needs schools and a Specialist Academy for children with social, emotional and behavioural needs. A second specialist academy for both boys and girls with social, emotional and mental health difficulties and a free school for children with ASD are scheduled for opening in 2017. All the special schools work closely in partnership via Trust Norfolk SEN to ensure a responsive and flexible service which includes an outreach service to mainstream schools. Norfolk's SEN local offer also includes 30 specialist resource bases hosted by mainstream schools.

Norfolk has a vibrant developing economy with growth sectors in agri-tech, life sciences, advanced manufacturing, energy and engineering. Financial services, tourism and culture and digital creative sectors also play a key underpinning role in Norfolk's ambitious growth plans.



This approach is closely aligned with the aspirations of New Anglia Local Enterprise Partnership to grow the local economy.

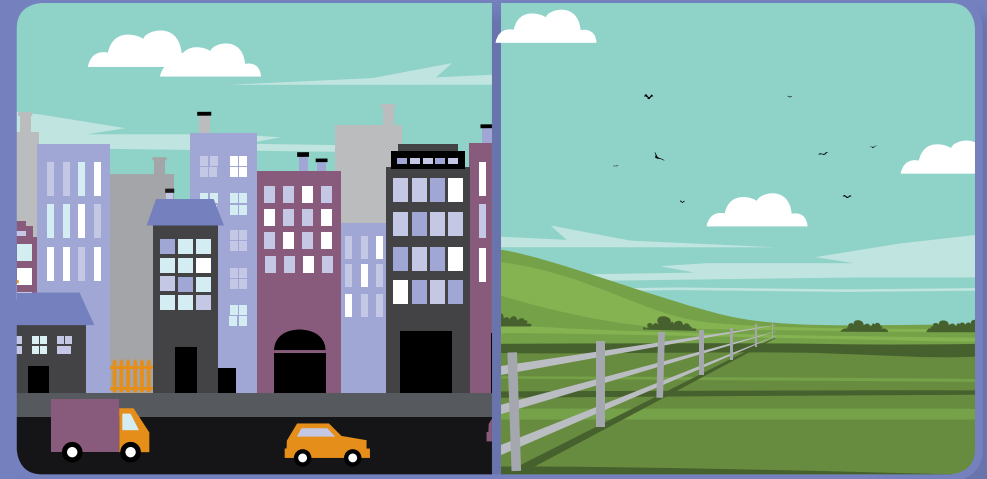
To achieve this, Norfolk needs to improve the pipeline of qualified young people who can effectively provide the skills businesses need to grow. Schools play a vital role in this transformation.

We want to build on good early years practice by working with outstanding providers to develop high quality provision for early years and childcare in schools, which is flexible, accessible and affordable.

The Local Authority works closely with three Diocesan Boards of Education (one Roman Catholic and two Church of England) supporting church schools.

In addition the county has 4 Further Education Colleges, 2 Sixth Form Colleges, and 1 University Technical College which opened in September 2014.

In the higher education sector, Norfolk is home to the renowned universities, the University of East Anglia (which in collaboration with the University of Essex sponsors the University Campus Suffolk and validates its degrees) and Norwich University of the Arts.



40% of Norfolk's population live in the four urban areas of Norwich, Great Yarmouth, King's Lynn and Thetford

While most of Norfolk looks rural, almost half of residents live in an environment classed as urban

Norfolk is “more rural” than most other rural counties.

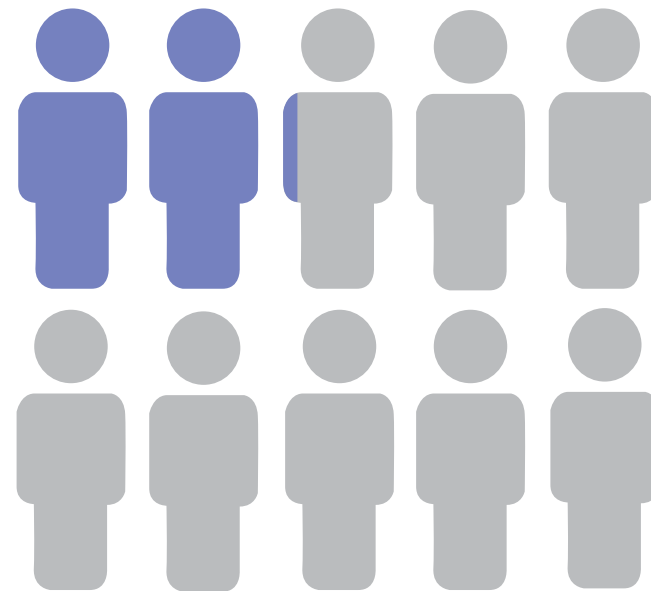
Journey times and distances to key services in rural Norfolk, like hospitals, are significantly higher than the average for rural areas regionally and nationally.

Planned housing growth

Norfolk is currently experiencing a period of population growth. The most recent Census estimates that the population of Norfolk stands at around 849,000 (National Census, 2011), which represents an increase of 60,800 people over the past decade. This is a phenomenon that population trend predictions suggest is going to continue, and the Office for National Statistics estimates that by 2035 the population of Norfolk could stand at an estimated 1,022,700 (ONS, 2010).

Children (0-10 years) are just one of the demographic groups that are expected to increase; it is estimated 5-10 year olds account for three quarters of this increase. In Norfolk, this rise in the population is predicted to be most concentrated in the areas of West Norfolk and South Norfolk.

A priority and challenge for the County Council is to be able to commission sufficient spaces for pupils in Norfolk schools which are good or better. The Council's most recent Local Growth and Investment Plan highlighted the progress that district councils are making in terms of their plans for new housing developments, and highlights key areas where this anticipated development indicates the need for establishment of a new school in the future.



Population

21.54% of Norfolk's population are aged 0–19
[23.94% in England]

Highest numbers of children

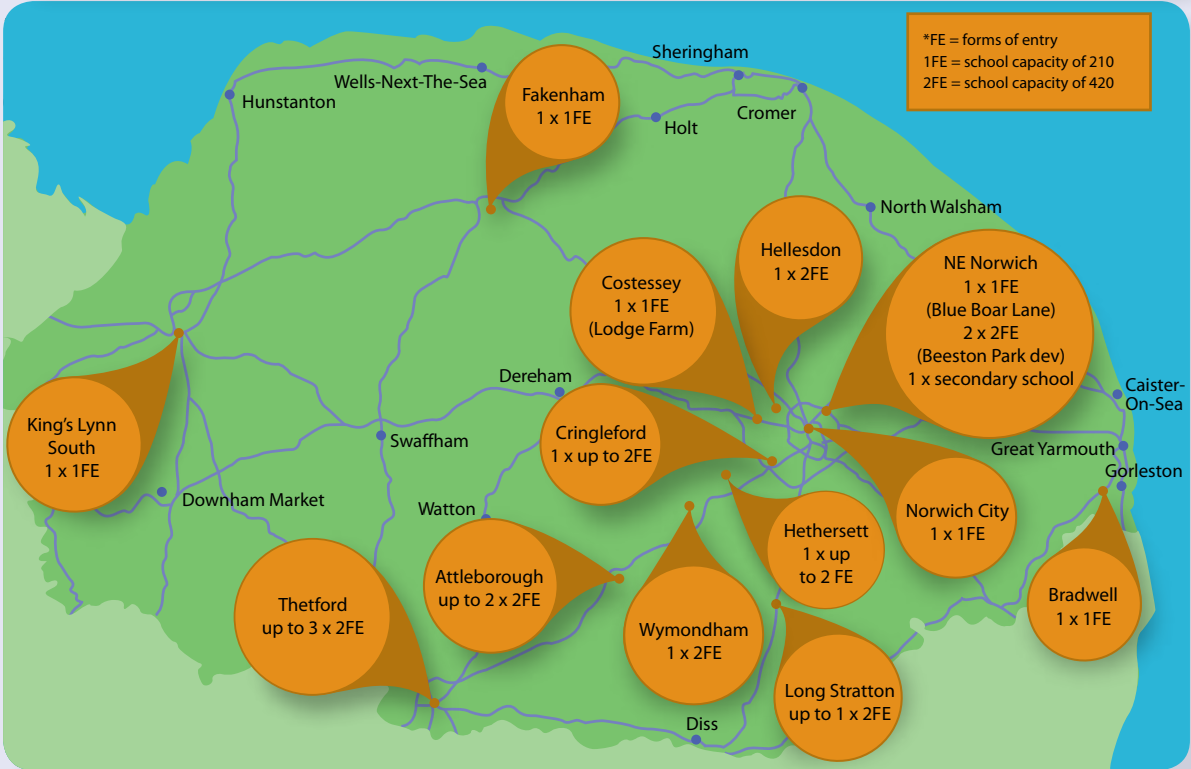
- King's Lynn • West Norfolk • Norwich

Lowest numbers of children

- North Norfolk • Great Yarmouth

Location	No of dwellings	New primary schools required	Other information
Attleborough	4,000	up to 2 x 2FE	
Bradwell	1,000	1 x 1FE	Site allocated
Costessey	550	1 x 1FE	Site allocated Lodge Farm
Cringleford	1,200	1 x up to 2FE	Site allocated
Fakenham	800-900	1 x 1FE	Site allocated
Hellesdon	1,200	1 x 2FE	Site allocated
Hethersett	1,200	1 x up to 2FE	
King's Lynn South	1,600	1 x 1FE	West Winch development
Long Stratton	1,800	up to 1 x 2FE	
North East Norwich (Sprowston, Old Catton/ Rackheath/ Thorpe)	7,000 (rising to 10,000 by 2026)	1 x 1 or 2FE and 2 x 2FE 1 x secondary school	Site allocated Blue Boar Lane Sites allocated in Beeston Park development Site to be decided
Norwich City	3,000	1 x 1FE	Option on site available until summer 2016
Thetford	5,000	up to 3 x 2FE	First site allocated in Phase 1 of development
Wymondham	2,200	1 x 2FE	Site allocated in Silfield

Proposed housing developments which may require a new school building within the next ten years. We will consider in every case whether to commission a new school or relocate an existing school to the new building.



Support for School Improvement

Norfolk County Council and its partners recognise that school standards in Norfolk are not yet good enough. We seek to accelerate improvement as a matter of urgency. Our ambition is to be a County in which standards improve rapidly well beyond national averages. We want our children to benefit from an education that is as good as that available anywhere and we want them to be ready and prepared for life as economically ambitious citizens.

In autumn 2012, Norfolk's strategy for school improvement was comprehensively overhauled. Our refreshed approach, driven by the strong partnership amongst Headteacher and Governor Associations, County and District Councillors,

Academy sponsors, the Dioceses and teacher unions is much sharper and more robust.

This approach, 'A Good Education for Every Norfolk Learner', clearly sets out the role and ambition of the County Council to accelerate the pace of educational improvement in Norfolk by harnessing all partners in the Norfolk education system to a common purpose and to make the best possible use of available resources.

At the heart is our commitment to working with all our partners to bring about continuous improvement in educational outcomes for All Norfolk's children and young people.



Menu



A Good Education for Every Norfolk Learner

Our key strategic aims underpin the support provided to settings, schools and colleges. The support for school improvement sits within the broader spectrum of **'A Good Education for Every Norfolk Learner'**. The four key aims are to:

- Raise Standards at all Key Stages
- Increase proportion of schools judged good or better
- Improve leadership and management including corporate leadership and strategic planning
- Improve monitoring and evaluation of impact



The County Council works in partnership with schools to support school improvement. The approach is characterised by the following features:

- A clear and unequivocal definition of the role of the County Council in supporting and challenging school improvement
- A Strategy Plan – co-constructed with schools, shared, published, regularly promoted, monitored and evaluated
- A systematic approach to supporting school improvement based on a differentiated relationship with schools
- Robust use of data and intelligence to risk assess and categorise schools
- Sharp, timely and robust intervention in 'schools of concern'
- An approach to targeting and supporting schools that 'require improvement' through an innovative and outward looking support programme – Norfolk Better to Best (NB2B)
- A strategic approach to building stronger school partnerships, collaborations, federations and to identifying appropriate structural solutions
- A focus on partnership with head teacher associations, Teaching Schools/ Alliances and Academy Sponsors to build a self-improving, self-sustaining school system
- Routine and honest monitoring of impact of actions
- A communication strategy which is relentless and open.

“Since we began the strategy to support school improvement 26,000 more Norfolk children now attend a good school. If we are to meet our objective of a good school for every Norfolk child we will continue to challenge Norfolk schools to do better.”

**Gordon Boyd – Assistant Director, Education,
Norfolk Children’s Services.**

In June 2014, the County Council’s Services to support school improvement were re-inspected by Ofsted, and judged to be effective.

“Norfolk’s arrangements for school improvement are now demonstrating positive impact on the standards achieved by pupils and on the quality of education provided by schools. Inspection outcomes confirm that the proportion of good or better schools is improving.”



Key messages:

- Norfolk is ambitious and has high expectations for its children and young people
- Norfolk works harmoniously with all its partners for the good of all Norfolk children and young people
- Norfolk is keen to foster innovation which has demonstrated its effectiveness in raising standards
- Norfolk is developing rapidly and is an exciting place to be

Our new schools will complement the improvements already taking place in Norfolk's education landscape, and will widen the choice for parents moving into our county.

We are interested in hearing from education providers who share our vision for the children and young people of Norfolk, and are willing to work with us and our partners to create exciting educational opportunities and to contribute to the improvement of the system for the benefit of all Norfolk learners.

If sponsoring a Free School/Academy in Norfolk would fit with your strategic development, please let us know by contacting us at schoolreview@norfolk.gov.uk

